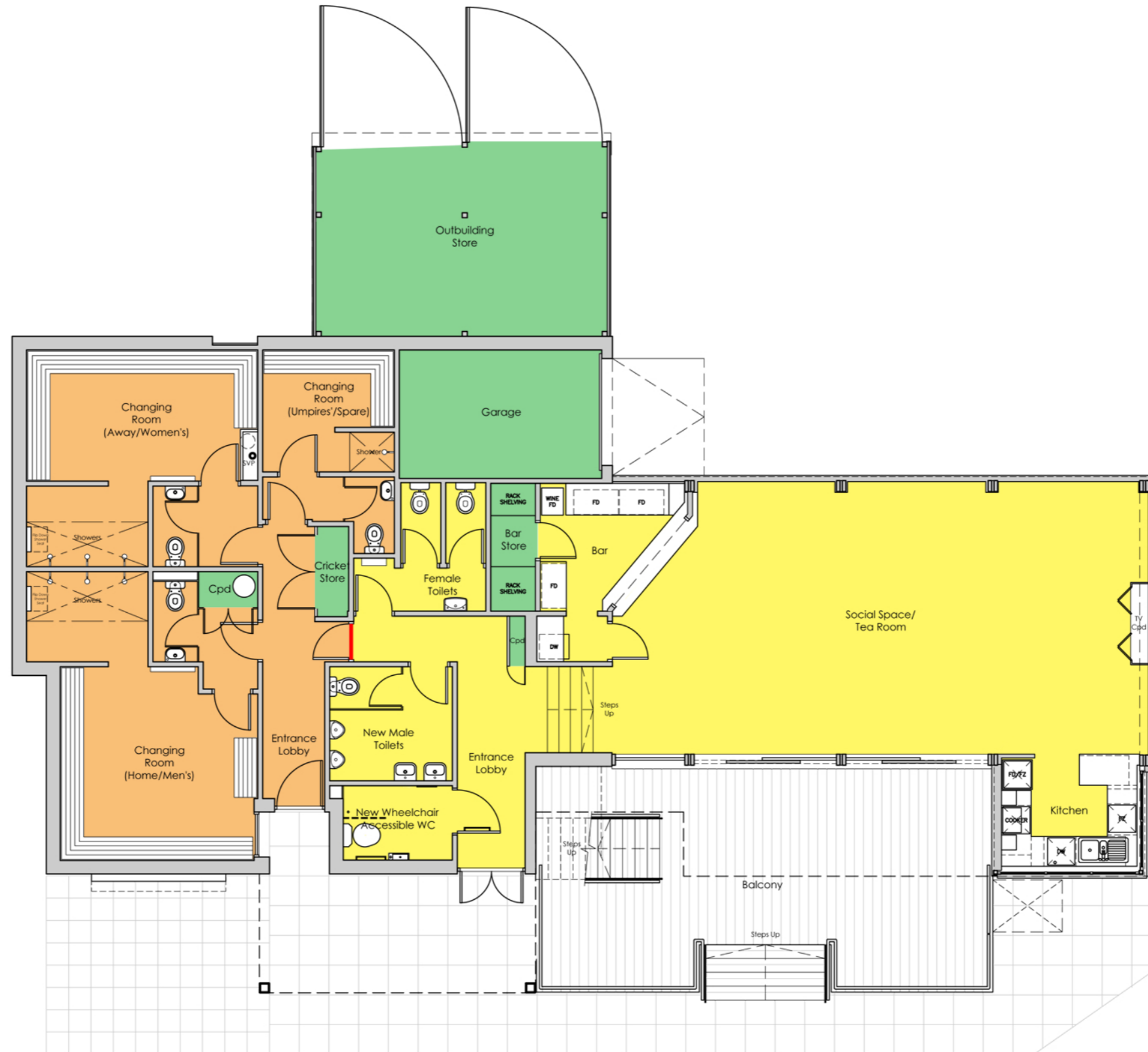


Player's Changing Area:

Player's Entrance: The pavilion should be welcoming and accessible with a well-defined entrance that is easy to find. The entrance is the first space that visitors encounter so it's easy to create a good impression by being simple to use. A notice-board is essential. The entrance area should provide good access to the changing rooms. There should be suitable security and surveillance for the batting team's changing room as this is left unlocked. Always have suitable entrance matting by the external doors.

Changing for players: Team changing rooms need to accommodate the anticipated number of players, substitutes and coaching staff. Disabled players should always be accommodated within the team changing rooms. Careful arrangement of screens and doors should allow privacy for changing players while others enter or leave the room. It is sufficient to have lockable doors to the changing rooms in order to keep personal belongings and valuables safe.

Toilet facilities: Provide suitable toilet facilities for spectators in addition to the toilets located in the players and umpires changing rooms. Careful planning and interconnecting doors could allow changing rooms to be locked while still allowing toilets to be used for evening social functions.



Social Area:

ECB GUIDANCE: The social spaces are the heart of the club, where players, officials and spectators gather to watch matches and enjoy refreshments during and after the game. Depending on the club size and circumstances, the following spaces are required:

- Social and dining/tea room – dual purpose room for social functions and to accommodate players and umpires for lunch and tea breaks.
- Bar area - many clubs raise funds through the sale of drinks. An appropriate license to sell alcohol is required and a view of the pitch is desirable.
- Meeting room - to conduct club meetings and affairs (use of Social Area when not used).
- Kitchen and servery with adjacent storage conveniently located for deliveries.

Some of these spaces can be combined to form one or more flexible spaces and should at least accommodate two teams plus umpires, scorers and spectators with a view of the pitch and scoreboard.

The social space should flow out to an external viewing area, with a mixture of sunny and shaded areas. Extended roof eaves will provide a shelter from rain, while temporary gazebos and parasols could be used to provide shade and create a sense of occasion.

Clubhouse Use Key:

- Players Changing Rooms and Facilities
- Social Area and Facilities
- General Storage Areas
- Position of lockable door allowing secure management of separate functions to suit the event/s

Separation of Clubhouse Function

Separation of the Changing Facilities from the Social Areas gives Greater Capability of Hosting Mixed Events Concurrently (Eg. Fixture + Social Event)

